

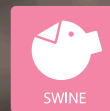
BROILER



LAYER



DAIRY



SWINE



GREENHOUSE

Product catalogue

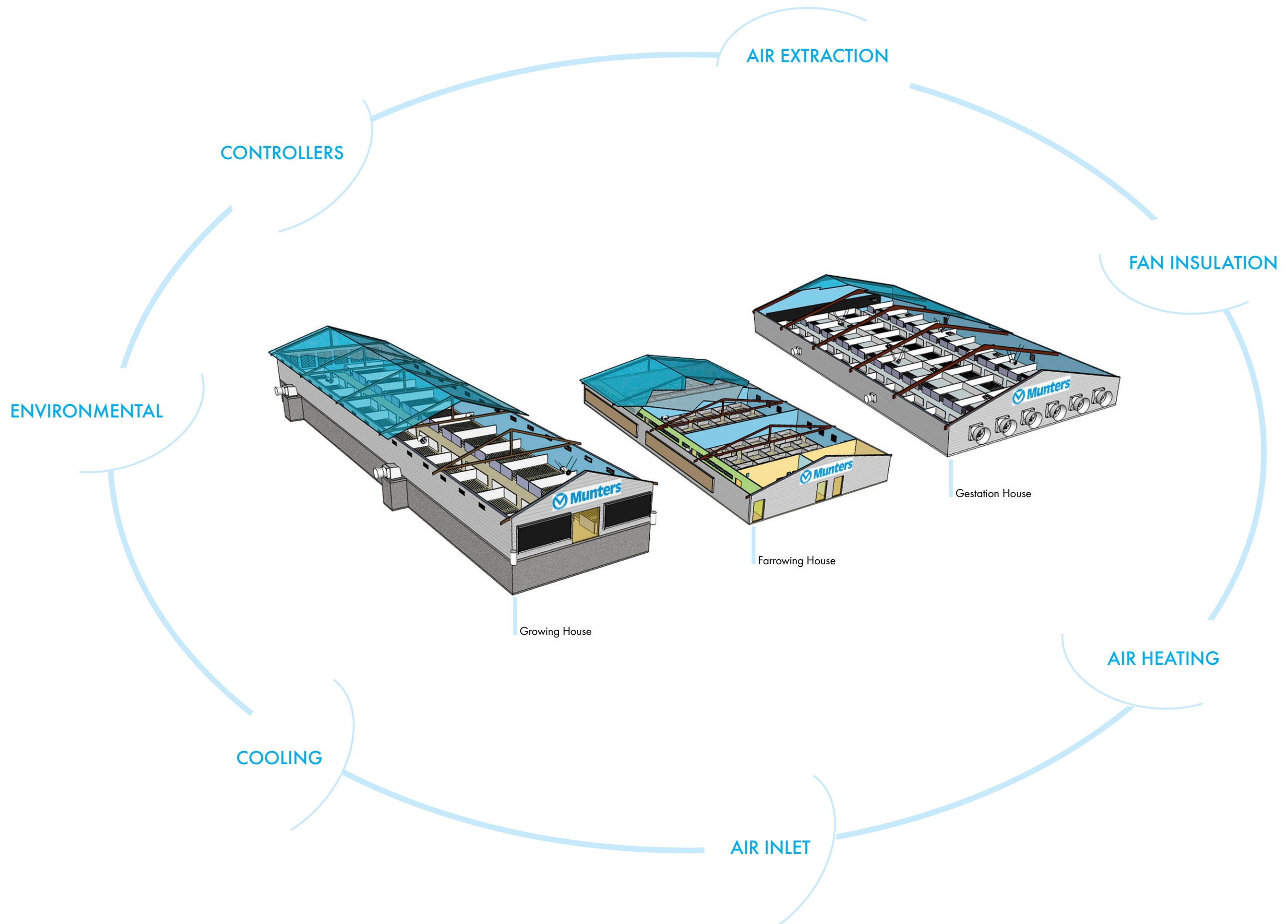
Solutions for the Swine segment

INDEX

Swine farms	p. 3
Features	p. 6
Air extraction	p. 8
Fan insulation	p. 13
Air heating	p. 15
Air inlet	p. 18
Cooling	p. 22
Environmental	p. 26
Controllers	p. 28

SWINE FARMS







HIGH EFFICIENCY



In the high end of Munters Agriculture products there is more and more interest for high efficiency products: the European community has introduced a regulation which determines the minimum acceptable efficiency rate for exhaust fans, moreover customers are more sensitive to running cost of the fans and to the quantity of energy necessary for moving a certain amount of air. Munters response to this demand of high efficiency products is represented by the new line of EDHE fans, designed for being fully compliant with European Ecodesign directives, by the cone fans EC50 and EC52, offering an improvement in the range of 10 - 15% of the performances thanks to introduction of discharge cone.

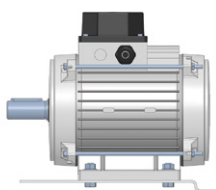
Recently Munters has designed and patented a unique EC motor, designed for working in conjunction with cone fan, able to offer an unbelievable level of efficiency and airflow.

MUNTERS PROTECT



In agriculture, corrosion is usually caused by a combination of many factors such as pH, high humidity levels, frequent contact with water, aggressive chemicals as found in manure or disinfectants, bacterial growth; and the list goes on. The industry is also continuously evolving and that might have surprising side effects: new agricultural chemicals or feed additives might do wonders for animal or plant health, but also enhance corrosion on metal products. For offering a consistent remedy to corrosion troubles Munters switched to a new material, called Munters Protect, which offers extremely high protection against corrosion. It consists of a coating made of Zinc, Aluminum and Magnesium and it delivers the best corrosion resistance performance, up to 10 times better than galvanised steel.

MOTORS



Munters is able to offer a wide range of motor power, depending on the application and the fan size. The smallest fan Munters produces, the 18" air recirculator EDC18 is equipped by a 0.33 Hp motor. The minimum ventilation fans and air recirculators can be equipped by a 0.5 or 0.75 Hp motor. The exhaust fan used for tunnel ventilation can be equipped by 1.0 or 1.5 Hp motor. For the recent production of big diameter fans, like EM52 and EC52, Munters has fitted them with a powerful 2.0 Hp motor. Most of the models of fans allows speed control obtained either by inverter (VFD) or autotransformer. This huge flexibility in the offering has been developed for being able to cover any demand in terms of airflow which might rise from our customers.

MUNTERS DRIVE



Ventilation inefficiencies are mainly related to 3 major causes: the types of motors used as the design of AC motor has physical limitations; the belt drive systems as the friction on the transmission components energy causes an energy loss and a high level of maintenance; the fixed single revolution speed and consequent fixed capacity, which prevents energy savings when ventilation demand is low. Munters Drive avoids these limitations through 3 innovations: a new motor architecture which shows a more efficient performance; the direct drive which makes the motor turning at the same revolution speed as the optimum propeller speed, eliminating friction losses and the need of maintenance; and the variable speed which reduces the motor speed and fan capacity when ventilation demand is low, generating significant energy savings. By combining the energy efficiency benefits that a Munters Drive offers over a conventional fan, users have been able to reduce annual ventilation costs by up to 40% and additionally saved a similar amount in maintenance cost reduction.

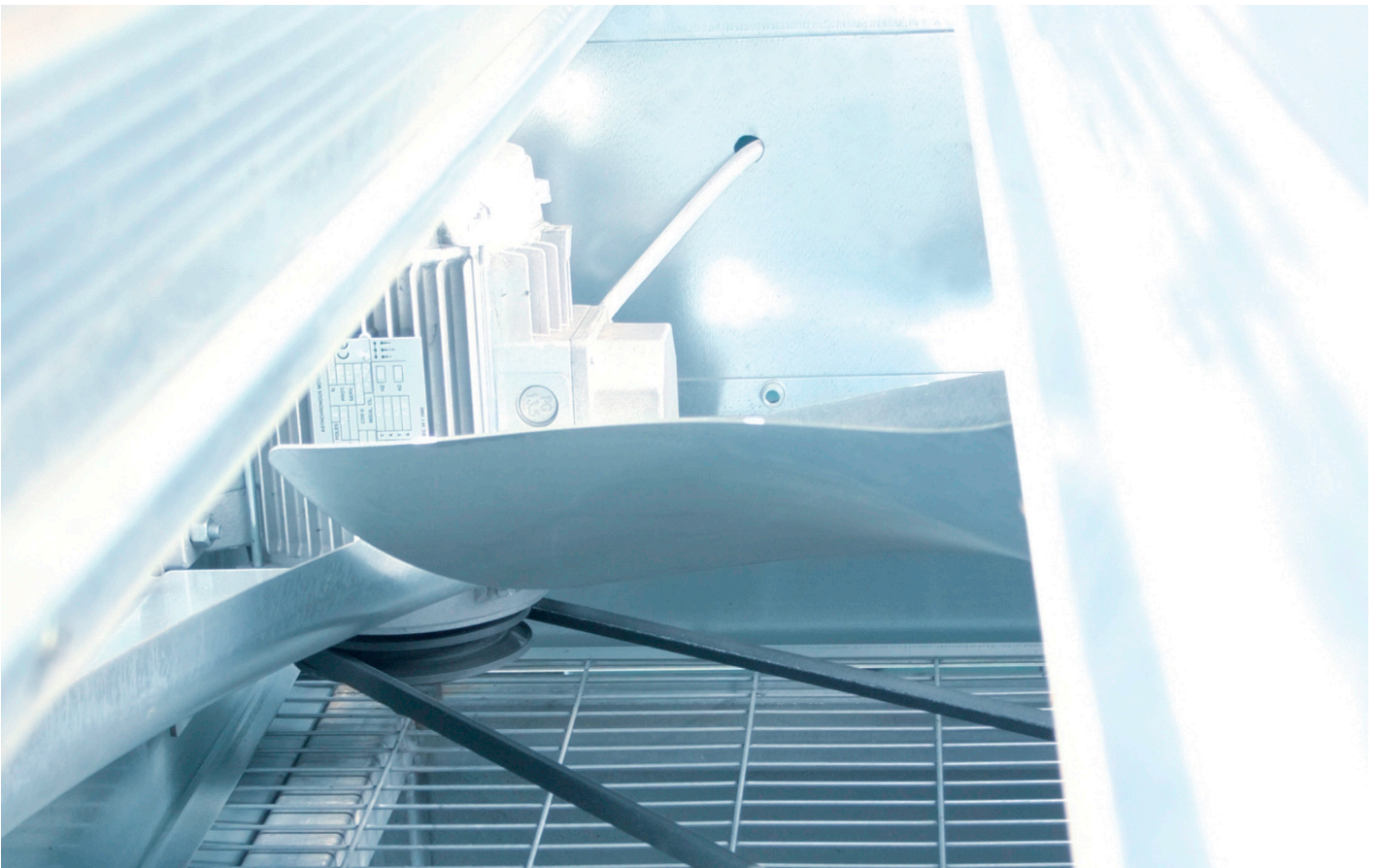
LOADING VOLUMES



Munters has developed an optimized loading displacement for combined loads on 20ft, 40ft and 40ft high cube containers and standard trailers*, which allows to balance volume and weight for delivery of complete system of fans, pad, accessories and heaters. Fans can be delivered assembled, in partially assembled form and fully disassembled depending on the number of products involved. The cooling pad and other accessories can be stored as well inside the container/trailer in order to completely fill the empty space fore and optimize the transport costs. Therefore, all the loading volumes shown in the catalogue are just a few of the many loading options available. Assembly manuals are provided for easy mounting of the received products.

* 13.60x2.40x2.60m

AIR EXTRACTION



EUROEMME® EMX50



- Family member of the time proven Euroemme® fan range
- Housing, shutter blades and components made in Stainless Steel 304
- Venturi made of plastic
- Propeller is statically and dynamically balanced
- Patented centrifugal system permits an energy efficient solution
- Central hub and v-belt pulley are made from die-cast aluminium, with reinforced ribs for prolonged lifetime



PERFORMANCES

Motor		1.0/1.2Hp	1.5Hp
Airflow at 0 Pa	m ³ /h [cfm]	37,000 [21,800]	42,400 [25,000]
Airflow at 25 Pa	m ³ /h [cfm]	32,500 [19,200]	38,400 [22,600]
Airflow at 50 Pa	m ³ /h [cfm]	26,200 [15,400]	33,800 [19,900]
Specific performance at 0 Pa	m ³ /h/W [cfm/W]	33.9 [20.0]	27.0 [15.9]

* All values refer to 3 phases 50Hz single speed motors.

Note: airflow data are measured at standard conditions (20°C, 1,013hPa)

LOADING VOLUMES

		ASSEMBLED	DISASSEMBLED
Container 20 ft	pcs.	29	170
Container 40 ft	pcs.	58	250
Container 40 ft HC	pcs.	58	250
Trailer 13.60x2.40x2.60 m	pcs.	65	300

EUROEMME® EM50 MPX



- Family member of the time proven Euroemme® fan range
- Patented centrifugal system permits an energy efficient solution
- All housing components designed for improved corrosion resistance
- All meshes, bolts and nuts in stainless steel for improved corrosion resistance



PERFORMANCES

Motor		1.0/1.2Hp	1.5Hp
Airflow at 0 Pa	m ³ /h [cfm]	37,000 [21,800]	42,400 [25,000]
Airflow at 25 Pa	m ³ /h [cfm]	32,500 [19,200]	38,400 [22,600]
Airflow at 50 Pa	m ³ /h [cfm]	26,200 [15,400]	33,800 [19,900]
Specific performance at 0 Pa	m ³ /h/W [cfm/W]	33.9 [20.0]	27.0 [15.9]

* All values refer to 3 phases 50Hz single speed motors.

Note: airflow data are measured at standard conditions (20°C, 1,013hPa)

LOADING VOLUMES

		ASSEMBLED	DISASSEMBLED
Container 20 ft	pcs.	29	170
Container 40 ft	pcs.	58	250
Container 40 ft HC	pcs.	58	250
Trailer 13.60x2.40x2.60 m	pcs.	65	300

EUROEMME® EDX30HE - EDX36HE



- Family member of the time proven Euroemme® fan range
- High airflow capacity with excellent energy efficiency
- Housing, shutter blades and components made in Stainless Steel 304
- Venturi in steel, protected with epoxy coated paint
- Low power consumption
- Direct drive system



PERFORMANCES

Model		EDX30HE	EDX36HE
Motor		0.5Hp	0.75Hp
Airflow at 0 Pa	m ³ /h [cfm]	14,400 [8,460]	19,100 [11,300]
Airflow at 12 Pa	m ³ /h [cfm]	13,700 [8,080]	18,200 [10,700]
Airflow at 25 Pa	m ³ /h [cfm]	12,900 [7,620]	17,200 [10,100]
Specific performance at 0 Pa	m ³ /h/W [cfm/W]	22.1 [13.0]	30.3 [17.8]

* All values refer to 3 phases 50Hz single speed motors.

Note: airflow data are measured at standard conditions (20°C, 1,013hPa)

LOADING VOLUMES

		ASSEMBLED		DISASSEMBLED	
Model		EDX30HE	EDX36HE	EDX30HE	EDX36HE
Container 20 ft	pcs.	72	54	180	160
Container 40 ft	pcs.	144	108	400	320
Container 40 ft HC	pcs.	144	108	400	320
Trailer 13.60x2.40x2.60 m	pcs.	168	120	400	360

EUROEMME® ED24HE MPX - ED30HE MPX - ED36HE MPX



- Family member of the time proven Euroemme® fan range
- High airflow capacity with excellent energy efficiency
- Direct drive system
- All housing components designed for improved corrosion resistance
- All bolts and nuts in stainless steel, the mesh powder coated for improved corrosion resistance



PERFORMANCES

Model		ED24HE MPX	ED30HE MPX	ED36HE MPX
Motor		0.5Hp	0.5Hp	0.75Hp
Airflow at 0 Pa	m ³ /h [cfm]	9,100 [5,360]	14,400 [8,460]	19,100 [11,300]
Airflow at 12 Pa	m ³ /h [cfm]	8,800 [5,180]	13,700 [8,080]	18,200 [10,700]
Airflow at 25 Pa	m ³ /h [cfm]	8,400 [4,960]	12,900 [7,620]	17,200 [10,100]
Specific performance at 0 Pa	m ³ /h/W [cfm/W]	17.3 [10.2]	22.1 [13.0]	30.3 [17.8]

* All values refer to 3 phases 50Hz single speed motors.

Note: airflow data are measured at standard conditions (20°C, 1,013hPa)

LOADING VOLUMES

		ASSEMBLED		DISASSEMBLED	
Model		ED30HE MPX	ED36HE MPX	ED30HE MPX	ED36HE MPX
Container 20 ft	pcs.	72	54	180	160
Container 40 ft	pcs.	144	108	400	320
Container 40 ft HC	pcs.	144	108	400	320
Trailer 13.60x2.40x2.60 m	pcs.	168	120	400	360

VX36 - VX51



- Cast aluminium airfoil propeller and UV resistant fibreglass housing
- Stainless steel hardware and fasteners
- High strength, extruded aluminium struts
- High quality, pillow block greasable bearings made in the USA
- 51" standard fan with poly discharge cone
- Greasable automotive-style belt tensioner
- Three phase models compatible with variable frequency drives
- Optional premium efficiency motor
- Optional belled inlet shutter for increased airflow

PERFORMANCES

Model		VX36	VX51
Motor		0.75Hp	1.5Hp
Airflow at 0 Pa	m ³ /h [cfm]	21,300 [12,540]	46,800 [27,600]
Airflow at 25 Pa	m ³ /h [cfm]	18,500 [10,860]	41,000 [24,100]
Airflow at 50 Pa	m ³ /h [cfm]	14,500 [8,520]	32,500 [119,100]
Specific performance at 0 Pa	m ³ /h/W [cfm/W]	25.4 [15.5]	34.1 [20.1]

* All values refer to 3 phases 50Hz single speed motors.

Note: airflow data are measured at standard conditions (20 °C, 1,013hPa)

LOADING VOLUMES

		DISASSEMBLED	
Model		VX36	VX51
Container 20 ft	pcs.	40	20
Container 40 ft	pcs.	80	42
Container 40 ft HC	pcs.	86	48
Trailer 13.60x2.40x2.60 m	pcs.	94	54

VX18 - VX24



- Extremely rugged and corrosion resistant fibreglass housing that maintains its shape and colour
- High impact resistant, flared discharge cone that is rotationally moulded and enhanced with patented technology
- Cast aluminium turbine blades featuring a stall-limiting design which prevents motor overload and increases airflow and efficiency
- Enhanced optional plastic belled inlet shutter
- Direct drive with high efficiency, variable speed motor

PERFORMANCES

Model		VX18	VX24
Motor		0.33Hp	0.33Hp
Airflow at 0 Pa	m ³ /h [cfm]	7,600 [4,490]	10,600 [6,230]
Airflow at 25 Pa	m ³ /h [cfm]	6,900 [4,080]	9,700 [5,650]
Airflow at 50 Pa	m ³ /h [cfm]	5,800 [3,430]	8,600 [5,040]
Specific performance at 0 Pa	m ³ /h/W [cfm/W]	18.9 [11.1]	28.7 [16.9]

* All values refer to 3 phases 50Hz single speed motors.

Note: airflow data are measured at standard conditions (20 °C, 1,013hPa)

LOADING VOLUMES

		DISASSEMBLED	
Model		VX36	VX51
Container 20 ft	pcs.	120	100
Container 40 ft	pcs.	250	200
Container 40 ft HC	pcs.	250	200
Trailer 13.60x2.40x2.60 m	pcs.	280	230

TU600 - TU800



- Bell mouth inlet and cone outlet ensure very high energy efficiency
- Designed to withstand climatic extremes and solar radiation
- All components made of highly corrosion resistant materials
- Insulated butterfly damper for tight seal when fan is not in use
- Aerodynamic design ensures a low noise level
- Patented 'click system' allows for compact transport volumes and quick on-site assembly
- High efficiency Munters Drive motor version available on request



PERFORMANCES

Model		TU600			TU800				
Motor type		STD	MUNTERS DRIVE		STD			MUNTERS DRIVE	
Motor size	[W]	250	660		370	430	550	660	
Airflow at 0 Pa	m ³ /h [cfm]	11,720 [6,898]	12,729 [7,492]	6,152 [3,621]	18,650 [10,977]	19,820 [11,666]	19,875 [11,698]	20,653 [12,156]	11,042 [6,499]
Airflow at 20 Pa	m ³ /h [cfm]	10,740 [6,321]	12,090 [7,116]	4,553 [2,680]	17,230 [10,141]	18,290 [10,765]	18,329 [10,788]	19,364 [11,397]	8,741 [5,145]
Airflow at 40 Pa	m ³ /h [cfm]	9,560 [5,627]	11,414 [6,718]	-	15,460 [9,099]	16,730 [9,847]	16,728 [9,846]	18,244 [10,738]	3,881 [2,284]
Specific performance at 0 Pa	m ³ /h/W [cfm/W]	27.5 [16.2]	28.4 [16.7]	91.4 [53.8]	31.7 [18.6]	33.0 [19.4]	25.0 [14.7]	34.0 [20.0]	116.0 [68.3]
Specific performance at 20 Pa	m ³ /h/W [cfm/W]	24.0 [14.1]	24.9 [14.7]	57.2 [33.7]	27.0 [15.9]	27.0 [15.9]	22.0 [12.9]	27.8 [16.4]	66.5 [39.1]
Specific performance at 40 Pa	m ³ /h/W [cfm/W]	20.1 [11.8]	22.0 [13.0]	-	23.0 [13.5]	22.4 [13.2]	19.1 [11.3]	24.0 [14.1]	27.8 [16.4]

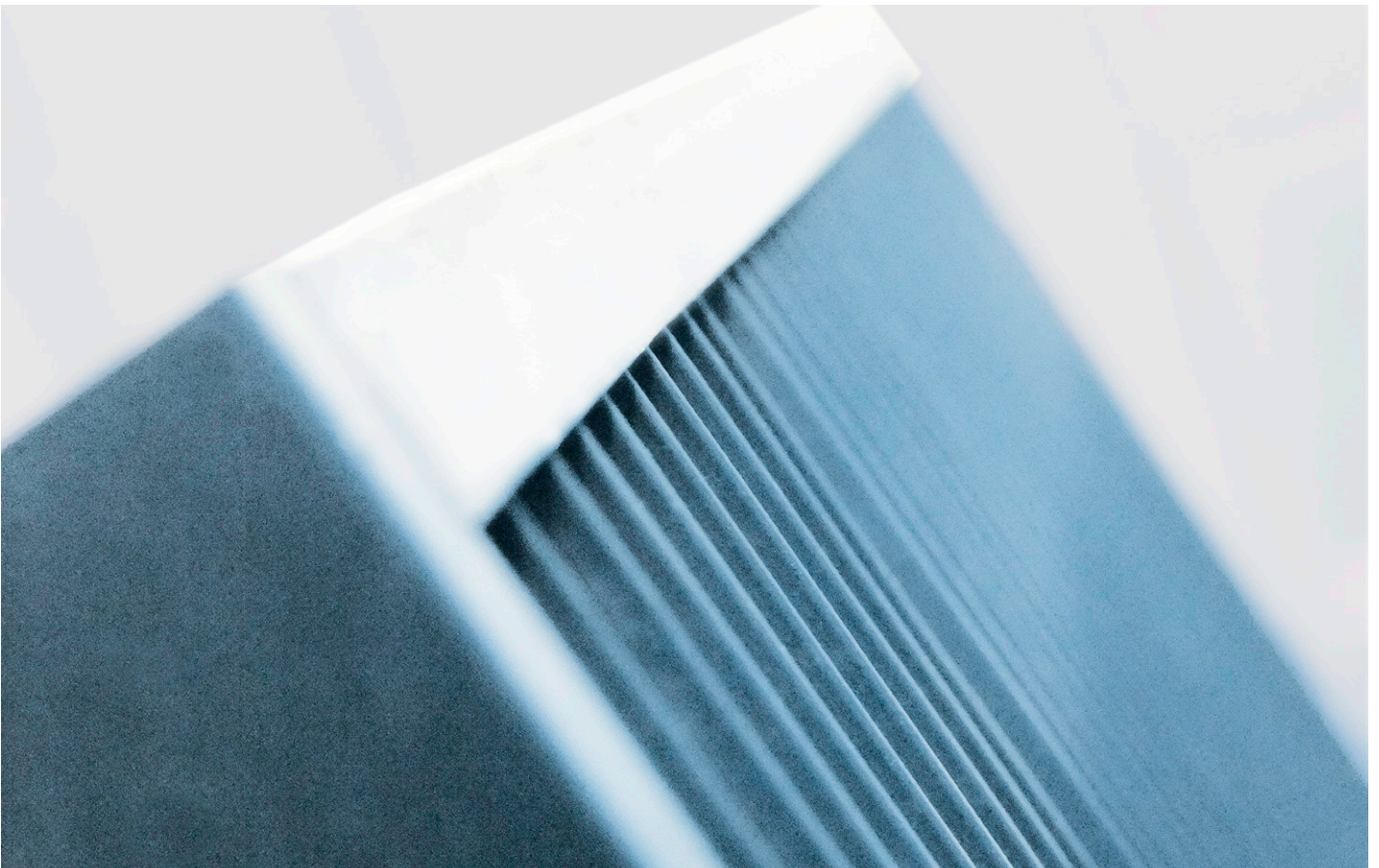
* All values refer to 3 phases 50Hz single speed motors.

Note: airflow data are measured at standard conditions (20°C, 1,013hPa)

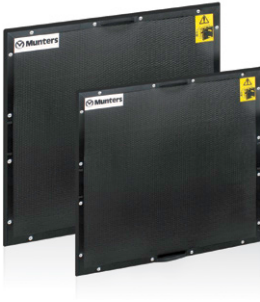
ACCESSORIES: LIGHT FILTER FOR TU

High light reduction factor.

FAN INSULATION



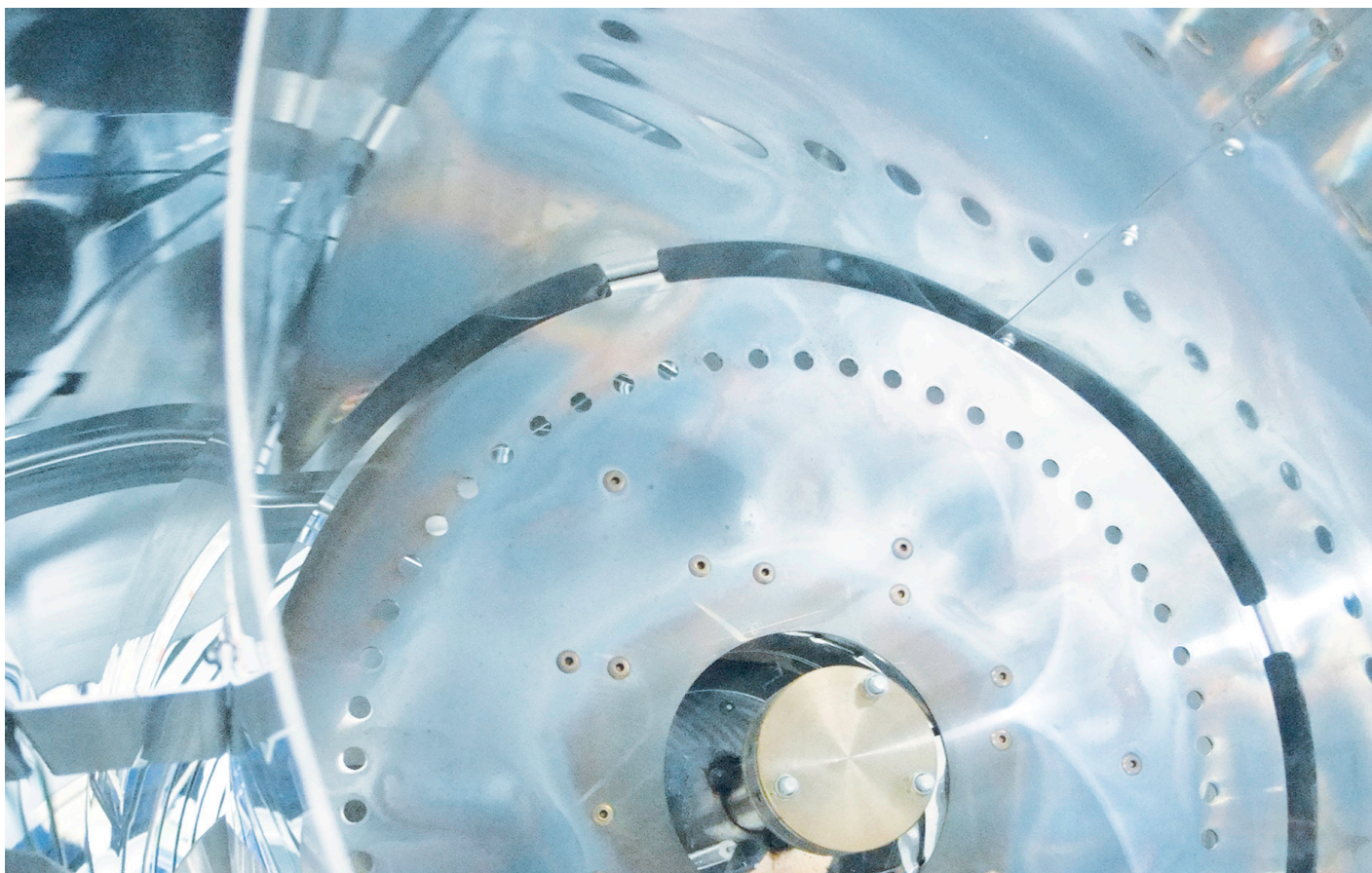
FI36 - FI50



- Reduced heat loss through fans during winter by up to 7 times
- Cost saving by reducing heating cost
- Quick and easy to install and mount
- Fits all Euroemme® extraction fans snugly
- Can be installed on air inlet or exhaust sides of fans
- Installation kits include all accessories required for installation
- Can be fitted onto other brands of exhaust fans with similar dimensions

DIMENSIONS			
Model		FI36	FI50
Length	[mm]	1,092	1,382
Height	[mm]	1,092	1,382
Width	[mm]	25	25

AIR HEATING



GFn85



- Dedicated for Munters Agriculture applications
- Unique frame design for convenient handling, transportation and installation
- Ergonomic design for comfortable maintenance and full accessibility
- IP55 enclosure of critical components e.g. electrical control box, electric motor
- Predispoused 5 poles plug socket for farm controller or room thermostat connection
- Corrosion resistant as housing components are made in Munters Protect or stainless steel AISI 430 and combustion chamber made in stainless steel AISI 430
- Safe design with photoelectric flame monitoring and overheating thermostat (airflow switch not needed)
- Suitable for a wide variety of fuels i.e diesel oil (not bio-diesel) and winter diesel

PERFORMANCES

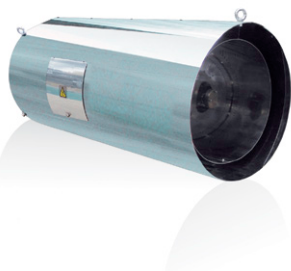
Maximum heating power	kW [kcal/h]	80.6 [69.303]
Working heating power	kW [kcal/h]	69.3 [59,587]
Diesel oil consumption	l/h [gal/h]	7.5 [1.98]
IP class**		IP55

** Electric box IP grade.

LOADING VOLUMES

Container 20 ft	pcs.	48
Container 40 ft	pcs.	108
Container 40 ft HC	pcs.	108
Trailer 13.60x2.40x2.60 m	pcs.	120

GN75 - GN95



- 100% thermal efficiency with net heating output of 75/95 [kW]
- Stainless steel housing corrosion resistant, for environments where highly corrosive gases are present
- Fuel options: natural gas (methane) or LPG (propane)
- Electrical box equipped with sockets for remote control via external controller (available on request)
- Ignition timer (delay 0/60s) for programming delayed start-up of multiple units preventing electrical or gas network overload
- Multiple safety features such as overheating thermostat, airflow pressure switch and gas supply pressure sensor

PERFORMANCES

Model		GN75	GN95
Heating power	kW [kcal/h]	73 [63,785]	93 [80,189]
Gas consumption natural gas	[m³/h]	7.0	8.9
Gas consumption propane gas*	[kg/h]	4.3	5.3
IP class**		IP55	

* Density values refer to the standard ambient conditions.

** Electric box IP grade.

LOADING VOLUMES

Container 20 ft	pcs.	60
Container 40 ft	pcs.	120
Container 40 ft HC	pcs.	120
Trailer 13.60x2.40x2.60 m	pcs.	138



- 100% thermal efficiency
- Ready to be connected to a room thermostat
- Easy to install and operate
- For outdoor installation or in greenhouses with automatic water supply (UNI EN 12669:2003)
- Stainless steel outer shell and combustion chamber
- Functions on natural gas or LPG
- Double solenoid valve for shutting off gas supply
- Safety switch preventing overheating
- Pressure switch detecting blockages of airflow

PERFORMANCES

Heating power	kW [kcal/h]	125 [107,650]
Gas consumption natural gas	[m ³ /h]	13.21
Gas consumption propane gas*	[kg/h]	8.70
IP class**		IP54

* Density values refer to the standard ambient conditions.

** Electric box IP grade.

LOADING VOLUMES

Container 20 ft	pcs.	30
Container 40 ft	pcs.	66
Container 40 ft HC	pcs.	66
Trailer 13.60x2.40x2.60 m	pcs.	75

AIR INLET



SMTX50



- Compact design and easy installation
- Actuators for individual control or controlling in groups
- Housing and shutter blades made in Stainless Steel 304
- Tight sealing and durable shutter blades
- Optional guard mesh to prevent entry of wild animals or birds
- Maintenance free and UV resistant bearings for shutter blades

PERFORMANCES

Airflow at 0 Pa	m ³ /h	0
Airflow at 20 Pa	m ³ /h	27,090
Airflow at 40 Pa	m ³ /h	38,261
Airflow at 60 Pa	m ³ /h	46,346

Note: airflow data are measured at standard conditions (20°C, 1,013hPa)

LOADING VOLUMES

		ASSEMBLED	DISASSEMBLED
Container 20 ft	pcs.	116	600
Container 40 ft	pcs.	232	1,000
Container 40 ft HC	pcs.	232	1,000
Trailer 13.60x2.40x2.60 m	pcs.	277	1,150

IS600 - IS800



- Reduced shipping volumes and easy installation
- Different models for adaptation to most buildings. Multiflex roof flashing for fitting to any slope between 12 and 25 degrees.
- Two available diameters, 600mm and 800mm and option for use without the top section to draw air from the loft space
- Integral wire mesh preventing wild animal entry
- Solid top cover and slots at the bottom of the cone ensure rainwater protection
- Patented 'Star diffuser' system ensures correct quantity and direction of incoming air
- Air circulator to be placed under the diffuser available as accessory
- Manufactured in durable white or black smooth and anti-soiling polyethylene
- Withstands cleaning with high pressure cleaner

PERFORMANCES

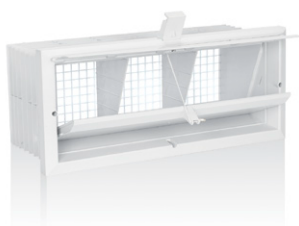
Model		IS600	IS800	IS600	IS800
		WITH CAP		WITHOUT CAP	
Airflow at -10 Pa	m ³ /h	3,357	5,843	3,647	6,946
Airflow at -20 Pa	m ³ /h	4,720	8,414	5,142	9,789
Airflow at -30 Pa	m ³ /h	5,770	10,285	6,500	12,150

Note: airflow data are measured at standard conditions (20°C, 1,013hPa)

ACCESSORIES: LIGHT FILTERS FOR IS

No light and less than 5% ventilation reduction for IS Air Inlet.

IW150 - IW250



- Easy installation
- Manufactured in durable white UV stabilized polystyrene
- Main door moulded in two pieces preventing deformation
- Main door has an insulated core, preventing condensation on inside
- Integrated aluminium profiles in main door preventing warping
- Adjustable flap allowing fine adjustment of air flow patterns
- Rainstop preventing rain from entering the structure
- Integrated mesh in corrosion resistant polystyrene preventing wild animal entry
- Withstands cleaning with a high pressure cleaner and integrated pulley for support of cabling

PERFORMANCES

Model		IW150	IW250
Airflow at -10 Pa	m ³ /h	1,320	1,440
Airflow at -20 Pa	m ³ /h	1,870	2,015

Note: airflow data are measured at standard conditions (20 °C, 1,013hPa)

IL100 - IL200 - IL300



- Easy installation
- Manufactured in durable white UV stabilized polystyrene
- Different models with heights ranging from 100 to 200mm
- Main door moulded in 2 pieces preventing deformation
- Main door has an insulated core, preventing condensation on inside
- Integrated aluminium profiles prevent main door warping
- Main door has rubber seal on the sides for tight sealing
- Integrated eyelet for supporting of cabling
- Withstands cleaning with a high pressure cleaner

PERFORMANCES

Model		IL100	IL200	IL300
Airflow at -10 Pa	m ³ /h	1,320	1,440	1,415
Airflow at -20 Pa	m ³ /h	1,870	2,015	2,000

Note: airflow data are measured at standard conditions (20 °C, 1,013hPa)



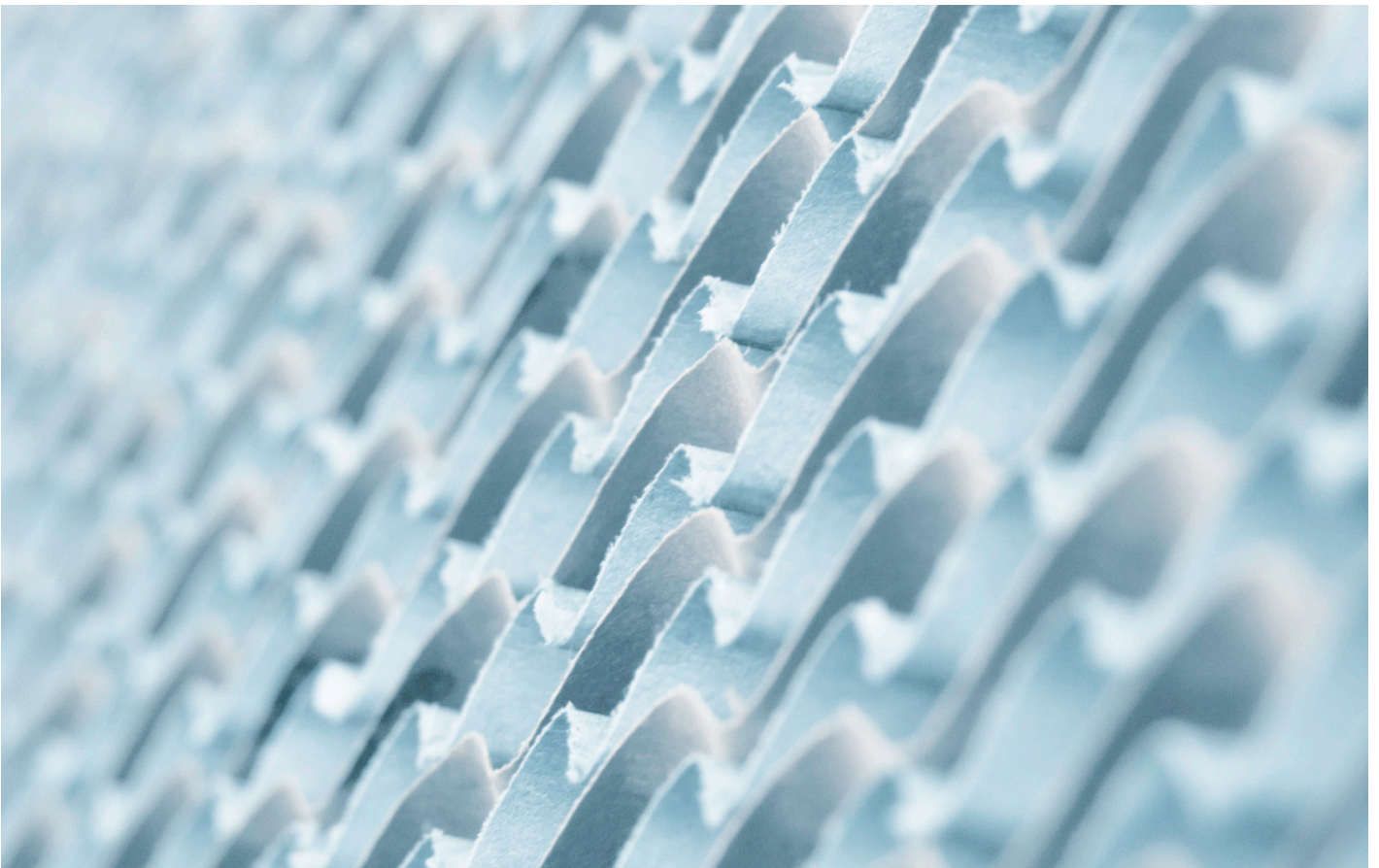
- Easy installation
- Plastic body for corrosion protection
- Suitable for operating in groups
- Optimize air distribution in minimum ventilation conditions

PERFORMANCES

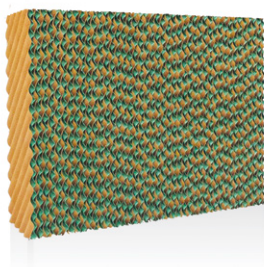
Model		L600	L800	L1000	L1200	L1500
Airflow at 20 Pa	m ³ /h	1,550	2,050	2,600	3,080	3,550

Note: airflow data are measured at standard conditions (20°C, 1,013hPa)

COOLING



CELdek® 7090-15



- High evaporation efficiency and superb wetting properties
- Low pressure drop when wet, leading to lower operating costs
- No water carry-over
- Low scaling and self cleaning
- Strong and self supporting
- Long life time and low running costs
- Quick and easy to install
- Environmentally friendly
- Consistent high quality

STANDARD DIMENSIONS

Length	mm	600			
Height	mm	1,000	1,500	1,800	2,000
Width	mm	100/150			

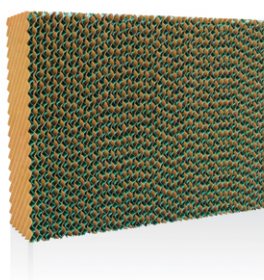
DISTRIBUTION PAD CELdek® 70120

Length	mm	600			
Height	mm	30			
Width	mm	100/150			

ACCESSORIES: LIGHT FILTERS FOR CELdek®

High light reduction factor.

CELdek® 7060-15



- High evaporation efficiency and superb wetting properties
- Low pressure drop when wet, leading to lower operating costs
- No water carry-over
- Low scaling and self cleaning
- Strong and self supporting
- Long life time and low running costs
- Quick and easy to install
- Environmentally friendly
- Consistent high quality

STANDARD DIMENSIONS

Length	mm	600			
Height	mm	1,000	1,500	1,800	2,000
Width	mm	100/150			

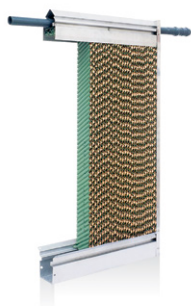
DISTRIBUTION PAD CELdek® 70120

Length	mm	600			
Height	mm	30			
Width	mm	100/150			

ACCESSORIES: LIGHT FILTERS FOR CELdek®

High light reduction factor.

WDP



- Quick and easy installation
- Easy maintenance and cleaning
- Flexible positioning of the water supply and discharge
- Resistant to corrosion (stainless steel 304, epoxy pre-coated galvanised steel)
- Designed to ensure an even wetting of the entire pad wall
- Stabilisation of the pad wall
- Fits any size of pad in height and width
- Available as complete system with all fitting parts
- Water filtration available upon request

STANDARD DIMENSIONS

Length	mm	multiple of 600			
Height	mm	1,205	1,705	2,005	2,205
Width	mm	100/150			

WDP MIST



- Alternative to evaporative pad cooling in cold continental and moderate climates, typically characterized by very brief periods of hot weather
- Minimizes heat stress which improves feed conversion for increase production
- Optimal relative humidity in-farm throughout the year
- Environmental benefits by effectively suppressing dust particles from the airstream
- Fast cleaning operation through preparatory soaking of various in-farm equipment
- Corrosion resistant components, made in stainless steel
- Quick and easy installation
- Fits on any size of housing system

PERFORMANCES

Maximum working pressure	Bar [PSI]	70 [1015]			
Water flow	l/min [gal/h]	12.0 [190.2]		21.0 [332.9]	
Nozzle tip diameter	mm	0.2	0.3	0.2	0.3
Maximum nozzles/pump	pcs	180	110	314	193
Nozzle water flow at 70Bar	l/h [gal/h]	4.0 [1.06]	6.5 [1.72]	4.0 [1.06]	6.5 [1.72]

DCP30 - DCP30 TOP4



- Pre-coated galvanised steel housing
- Tank manufactured in thermoplastic material
- Electrical motor with IP55 protection grade
- CELdek® 7090-15 evaporative cooling pads
- Circulation water unit is CE approved
- Complete plumbing kit incorporated
- Electrical enclosure with safety and control switchgear
- Single-phase as option

STANDARD DIMENSIONS

Model		DCP30	TOP4
Length	mm	1,640	1,360
Height	mm	1,000	1,000
Width	mm	1,520	2,500

PERFORMANCES

Airflow at 0 Pa	m³/h [cfm]	16,000 [9,415]	
Motor power*	kW [hp]	1.1 [1.5]	
Cooling efficiency	%	83 - 85	
Cooling effect @ 50% RH	°C [°F]	DCP30 - TOP4	
		OUTSIDE TEMPERATURE	INSIDE TEMPERATURE
		34 [93]	27 [81]
		30 [86]	23 [73]
		26 [79]	20 [68]

* Three-phase electric motor as standard, single phase as options.

Notes: the DCP is intended to be installed outside the animal housing. The cooling effect mentioned above are estimates and can vary based on local conditions.



MAC AIR CLEANER



- Ammonia reduced by 89% on average
- Maximum ammonia reduction from start-up
- Dust reduction
- Non-clogging filters
- Efficient droplet separators
- Droplet separators can be drawn out and washed from the outside
- Easy maintenance
- User friendly
- Easy to install
- Corrosion resistant material

PERFORMANCES

Ammonia reduction	VERA test - Average during a year	89%
Airflow	Maximum	25,000 m ³ /hour at 40 Pa
Power	Maximum including fan, circulation pump, dosing pump and bilge	4.2 kW
	Average	Depends on house and management. In a layer house with 13,000 animals and one air cleaner is measured 3.4 kW on average. This also includes electricity to ventilate the first 25,000 m ³ /hour.
Electricity	Voltage Frequency Current IP Class	3x400 Volt 50 Hz 16 A IP 55
Weight	Air cleaner without liquid Air cleaner with liquid	825 kg 2,325 kg
Water	Average water supply	300 liter/day
Waste water	Drainage volume	Depends on installation and type of house and management. In a layer house was drained maximum 150 liter/dag
Acid consumption	Sulphuric acid 96%	3 kg sulphuric acid per kg removed ammonia. In practice it has been less, as the water itself captures part of the ammonia.



PLATINUM PRO



- Munters Drive ready
- Access via the Web or Cloud
- Business Intelligence provides data analysis 24/7 and real time alarms via smartphone or web
- Supports a large number of input/outputs, both analog and digital and up to 200 heavy duty relays (2 HP)
- Smart On/Off/Auto override switches and battery backup option
- 16 independent heat zones
- Precision fogger and evaporative cooling system
- Failsafe emergency relay
- SD card and ARM CPU and multilanguage support

FARM PREMIUM XL - XL P



- Modular system to meet specific requirements
- Complete remote communication with real-time visual outlook
- SD card port to save history & update software and multi-language support
- 16 independent heat zones
- Precise fogging and cooling systems and feed management with integrated overflow alarm and shut off
- Current sensor for monitoring power consumption and low water pressure alarm
- Up to 80 heavy-duty relays and large graphic display
- Fail safe emergency relay
- Static pressure control and CO₂ sensor

FARM MASTER - FARM CENTER



Farm Center

- Manages an entire network from a single computer
- Has a user-friendly programming interface
- Sends alarms alerting you of any problem

Farm Master

- Easy programming and Programmable outputs
- Alarm system and Large display
- Up to 4 temperature sensors
- Water, feed & Humidity control

FARM PRO 3G



- 20 relays
- Precision ventilation
- Static pressure sensor
- 6 Temp. and 2 RH sensors
- Network communication

FARM HAND CCU 10R



- Up to 9 fans groups
- Variable speed fan control via built-in triac card
- Analogue 0 - 10V outputs for variable speed fans and variable heaters
- Humidity treatment program and wind speed and direction sensor for natural ventilation
- Inlets and curtains control
- 110V/220V power supply
- Time table for house lighting
- Data plug for easy transfer of settings
- Supported by Munters PC communication software

FARM GUARD



- Plug-in cellular modem
- Messages sent in any format: voice, text or pager to multiple recipients
- Voice card sends real time audio alarm messages informing of developments as they happen
- Plug-in line modem
- 8 digital inputs
- Battery backup
- Wired/wireless communication to the farm office from the climate controllers
- Bulletins sent in multiple languages
- Fully updateable firmware and firewall ensuring end-to-end security

FARM ALARM



- Independent alarm unit activating fan and heater
- User-friendly, one-touch setting
- Real Time Clock with battery backup
- Water and dust resistant
- Un-erasable memory
- Simple installation and service

NOTES



www.munters.com

Australia Phone + 61 2 8843 1594, agh.info@munters.com.au, **Brazil** Phone +55 41 3317 5050, contato@munters.com, **Canada** Phone +1 517 676 7070, aghort.info@munters.com, **China** Phone +86 10 8048 3493, marketing@munters.cn, **Denmark** Phone +45 98 623 311, aghort@munters.dk, **India** Phone +91 20 6681 8900, info@munters.in, **Indonesia** Phone +66 2 642 2670, info@munters.co.th, **Italy** Phone +39 0183 5211, info@munters.it, **Japan** Phone +81 3 5970 0021, mkk@munters.jp, **Korea** Phone +82 2 7618 701, munters@munters.co.kr, **Mexico** Phone +52 818 2625 400, dhinfo@munters.com, **Singapore** Phone +65 7 446 828, info@munters.com.sg, **South Africa and Sub-Sahara Countries** Phone +27 11 997 2000, info@munters.co.za, **Spain** Phone +39 0183 5211, info@munters.it, **Sweden** Phone +46 8 6266 300, info@munters.se, **Thailand** Phone +66 2 6422 670, info@munters.co.th, **Turkey** Phone +90 262 7513 750, info@muntersform.com, **USA** Phone +1 517 676 7070, aghort.info@munters.com, **Export & Other countries** Phone +39 0183 5211, info@munters.it